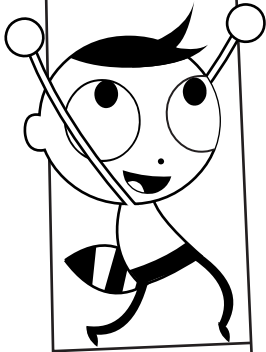
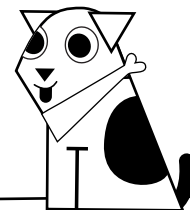
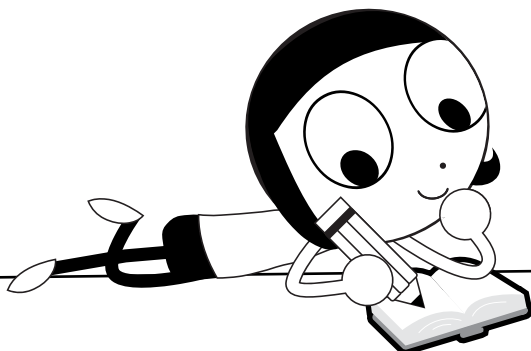
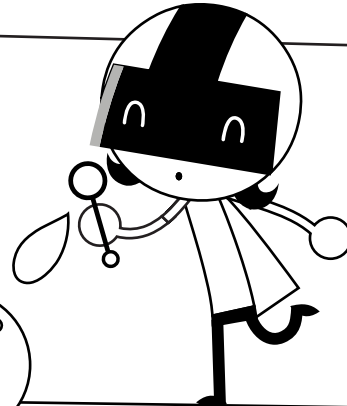


Learn at Home with PBS KIDS



Celebrating Winter

BINGO





Learn at Home with PBS KIDS

**Week of
December 7th**

Hello, Families!

Welcome to **Learn Along Bingo!** We're happy to share PBS KIDS activities with you and to work with PBS member stations and community partners across the country to help support learning at home. With Learn Along Bingo, children can view, explore, and play as they learn alongside their PBS KIDS friends on the PBS KIDS 24/7 channel. We hope your family will use it to inspire learning each and every day.

It's Celebrating Winter Week!

In this packet, there are printable activities and everyday learning ideas for you and your child to choose from. As you complete each square, mark it off to celebrate the learning.

Learning Spotlight: Identifying Behavioral Changes in the Winter

This week, we're learning how identifying behavioral changes in the winter helps us to see how animals (including humans) change during different seasons to adapt to the environment and survive.

Show What You Know: What to Wear In Russia Activity

The last activity in this packet is a perfect way for children to share how they adapt to the weather and changing seasons.

Tune in: Watch NATURE CAT at 12pm ET on Tuesday, December 8th on the PBS KIDS 24/7 channel.

Ready for more? Watch your favorite PBS KIDS shows on the 24/7 channel and live stream at pbskids.org/video/livetv or on your local PBS station.

Happy learning!
PBS KIDS



Find free activities, articles and tips to support at-home learning on pbskidsforparents.org

PBS KIDS and the PBS KIDS Logo are registered trademarks of Public Broadcasting Service. Used with permission.

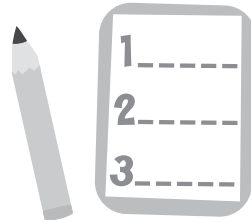


Celebrating Winter

BINGO



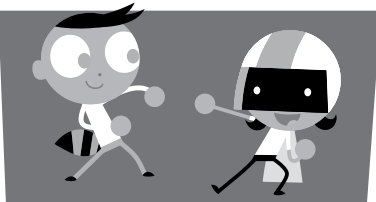
Animals in Alaska



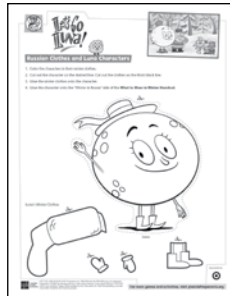
Make a list of three animals that live in the cold. What features help them survive?



Dog Sled



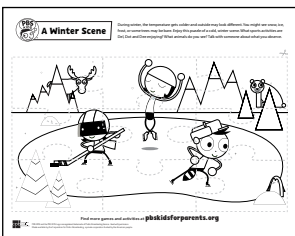
Do "The Freeze" dance. Dance when the music plays and stop when the music stops.



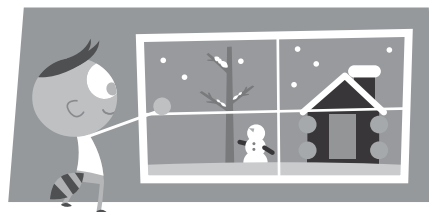
What to Wear in Russia



What do bears and squirrels do to prepare for the winter? Tell someone.



A Winter Scene



Look outside a window and describe how it looks different because it is the winter.



What To Wear Where I Live

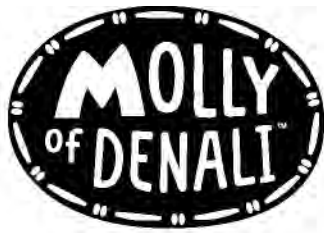


Grades 1-2

Find more games and activities at pbs.org/parents/learn-at-home



PBS KIDS and the PBS KIDS Logo are registered trademarks of Public Broadcasting Service. Used with permission. Made available by the Corporation for Public Broadcasting, a private corporation funded by the American people.



Name _____

Which fact matches each animal? Draw a line.

Animals in Alaska



Puffin

A My fur is usually red but my tail always has a white tip.



Moose

B I am part of a team of dogs that pulls a sled.



Red Fox

C I'm a bird that can swim underwater.



Husky

D In winter, my fur becomes thick and white.



Bald Eagle

E My tall legs and wide hooves help me walk in deep snow.



Arctic Fox

F My wings can be 8 feet across when I spread them out.

Find more games and activities at pbskidsforparents.org

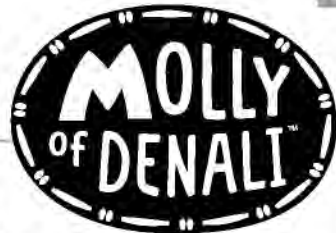
MOLLY OF DENALI™ is produced by GBH Kids and Atomic Cartoons in association with CBC Kids.

Funding for MOLLY OF DENALI™ is provided by a Ready To Learn Grant from the U.S. Department of Education; the Corporation for Public Broadcasting, a private corporation funded by the American People; and by public television viewers. Additional funding made possible with the participation of the Province of British Columbia Production Services Tax Credit. Corporate funding provided by the T. Rowe Price College Savings Plan and IKEA.

The contents of this program were developed under a grant from the Department of Education. However, those contents do not necessarily represent the policy of the Department of Education and you should not assume endorsement by the Federal Government. The project is funded by a Ready To Learn Grant (PR/HRWARD No. 112954120103, CFDA No. 84.125A) provided by the Department of Education to the Corporation for Public Broadcasting (Molly of Denali, TM/© 2013 GBH Educational Foundation. All rights reserved. PBS KIDS and the PBS KIDS Logo are registered trademarks of Public Broadcasting Service. Used with permission. Made available by the Corporation for Public Broadcasting, a private corporation funded by the American people.



How to Make a Dog Sled Adventure Playset



Create your own dog sled adventure with Molly, Tooeey, and Trini!

Follow the steps on the next pages to make a dog sled out of paper, complete with dog team and passengers: Molly, Tooeey, and Trini. Where will your imagination take them?

Materials

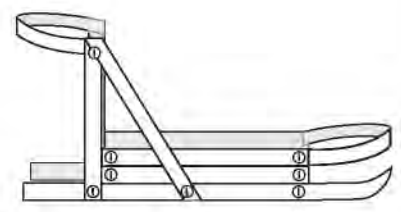
- Printouts of sled pieces, dog team, and passengers
- Crayons or markers
- Scissors
- Empty cereal box (or other heavy-weight paper or cardboard)
- Glue or glue stick
- Pencil
- Tape
- String or yarn

My dad races in the Iditarod. One day, I will too!



Make Your Dog Sled

1. Color the sled pieces on page 3.
2. Cut the cereal box so that you have a piece of flat cardboard.
3. Glue the printout with the sled pieces onto the printed side of the cereal box cardboard. Smooth out any bubbles.
4. Use the tip of a pencil to punch a hole in the dog sled where indicated.
5. When the glue is dry, cut out the sled, the brush bow, and the handlebar.
6. Fold up each side of the sled, with the colored sides facing out.
7. Use tape to attach the brush bow to the runners at the front of the sled.
8. Use tape to attach the handlebar to the top rail on each side of the sled.



A dog sled is a sled pulled by specially trained dogs over ice or through snow. The Alaskan Husky is the most commonly used sled dog.

Dog sleds come in many designs, shapes, and sizes. Traditionally, dog sleds have transported people and supplies and were a critical part of everyday life in the Arctic. They are also used for fun and sport. The most famous dog sled race is the Alaskan Iditarod Trail Sled Dog Race.

For more games and activities, visit pbskidsforparents.org

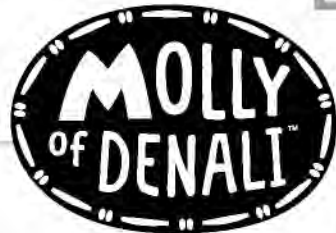
Powered by a Ready To Learn Grant



The contents of this program were developed under a grant from the Department of Education. However, those contents do not necessarily represent the policy of the Department of Education, and you should not assume endorsement by the Federal Government. The project is funded by a Ready To Learn grant (PR/AWARD No. U295A150003, CFDA No. 84.295A) provided by the Department of Education to the Corporation for Public Broadcasting. Made available by the Corporation for Public Broadcasting, a private corporation funded by the American people.

Funding for MOLLY OF DENALI™ is provided by a Ready To Learn Grant from the U.S. Department of Education; the Corporation for Public Broadcasting, a private corporation funded by the American People; and by public television viewers. Additional funding made possible with the participation of the Province of British Columbia Production Services Tax Credit. Corporate funding provided by the T. Rowe Price College Savings Plan and IKEA®

MOLLY OF DENALI™ is produced by GBH Kids and Atomic Cartoons in association with CBC Kids. PBS KIDS and the PBS KIDS Logo are registered trademarks of Public Broadcasting Service. Used with permission. Molly of Denali and related characters and indicia are trademarks and copyright 2020 WGBH Educational Foundation. All rights reserved.



Make Your Dog Team

1. Cut out the dog team on page 4.
2. Fold in half along the center fold line to form two rows of dogs.
3. Fold the two bottom pieces under the dog team's feet and tape together to form a stable base.
4. Use the tip of a pencil to punch a hole at the back of the dog team where indicated.
5. Tie the string from the dog sled to the dog team. Now the dog team is ready to pull the sled!



Make Molly, Tooeey, and Trini

1. Cut another piece of flat cardboard from the cereal box.
2. Glue the page with the characters (page 5) onto the printed side of the cereal box cardboard. Smooth out any bubbles.
3. When the glue is dry, cut out each character.
4. Fold the long tabs at each character's feet into a loop behind the character. Tape the two ends together to form a circular base to help the characters stand upright.
5. Now Molly, Tooeey, and Trini can hop aboard the sled for some great adventures!



Let's Go!

Ready for a dog sled adventure? Whether you imagine that you're moving people from place to place, transporting supplies, or participating in a dog sled race, you need to know common commands to get your dog team where you want it to go.

Hike! Start moving, or go faster.

Easy! Slow down.

Gee! Turn right.

Straight ahead! Move forward.

Haw! Turn left

On by! Pass.



For more games and activities, visit pbskidsforparents.org

Powered by a Ready To Learn Grant



T. Rowe Price COLLEGE SAVINGS PLAN

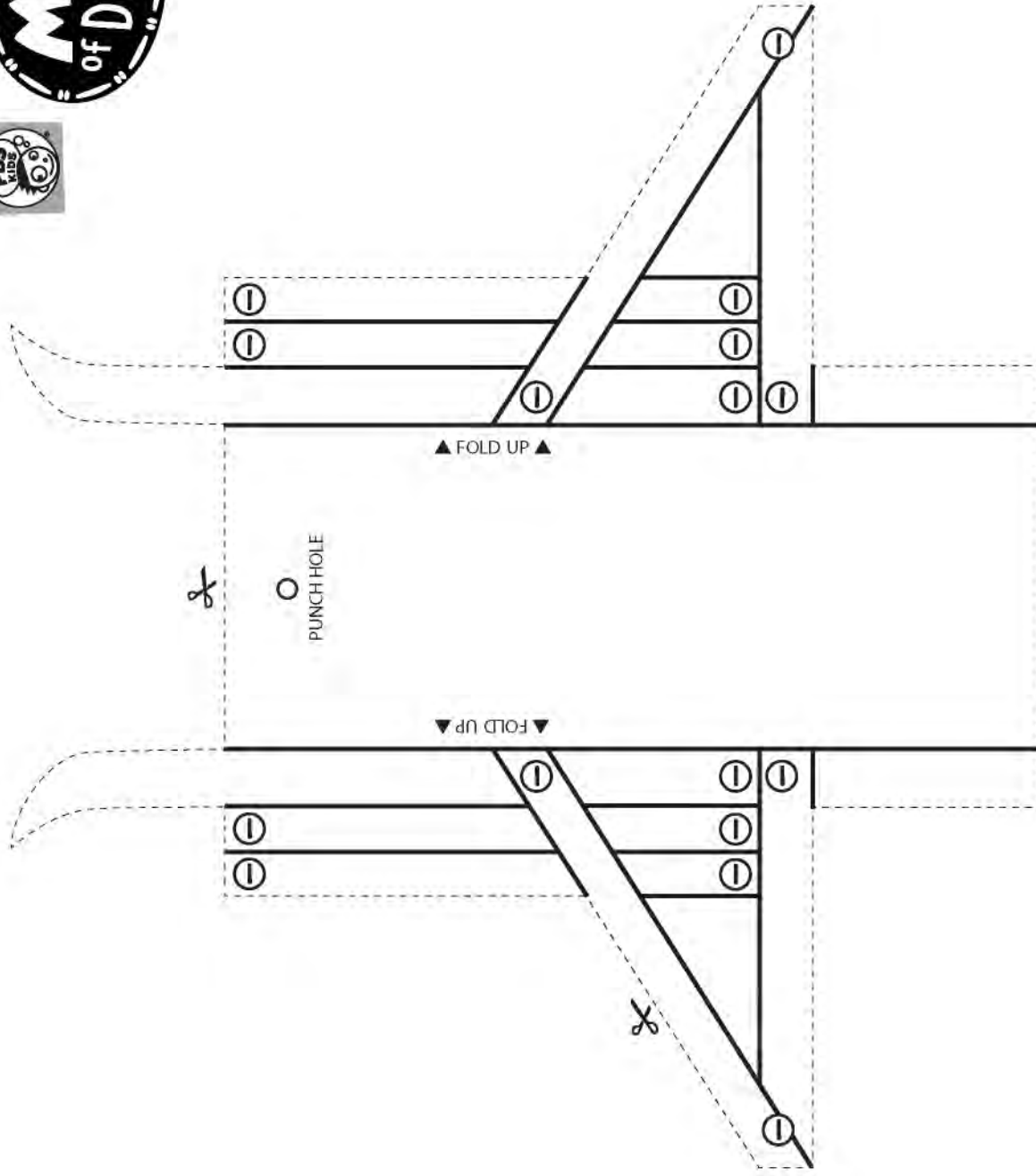
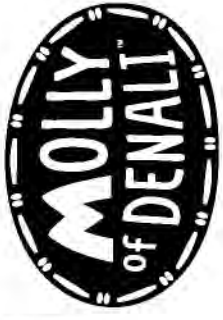


The contents of this program were developed under a grant from the Department of Education. However, those contents do not necessarily represent the policy of the Department of Education, and you should not assume endorsement by the Federal Government. The project is funded by a Ready To Learn grant (PR/AWARD No. U295A150003, CFDA No. 84.295A) provided by the Department of Education to the Corporation for Public Broadcasting. Made available by the Corporation for Public Broadcasting, a private corporation funded by the American people.

Funding for MOLLY OF DENALI™ is provided by a Ready To Learn Grant from the U.S. Department of Education; the Corporation for Public Broadcasting, a private corporation funded by the American People; and by public television viewers. Additional funding made possible with the participation of the Province of British Columbia Production Services Tax Credit. Corporate funding provided by the T. Rowe Price College Savings Plan and IKEA®.

MOLLY OF DENALI™ is produced by GBH Kids and Atomic Cartoons in association with CBC Kids. PBS KIDS and the PBS KIDS Logo are registered trademarks of Public Broadcasting Service. Used with permission. Molly of Denali, and related characters and indicia are trademarks and copyright 2020 WGBH Educational Foundation. All rights reserved.

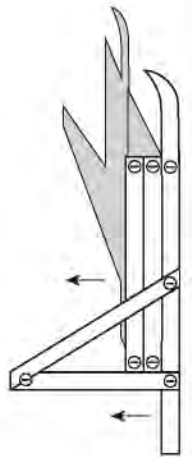
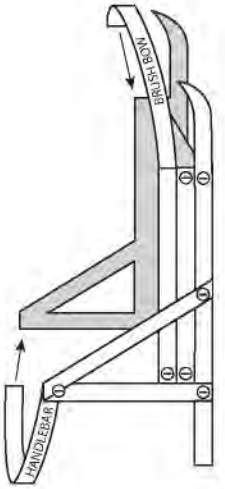
SLED PIECES

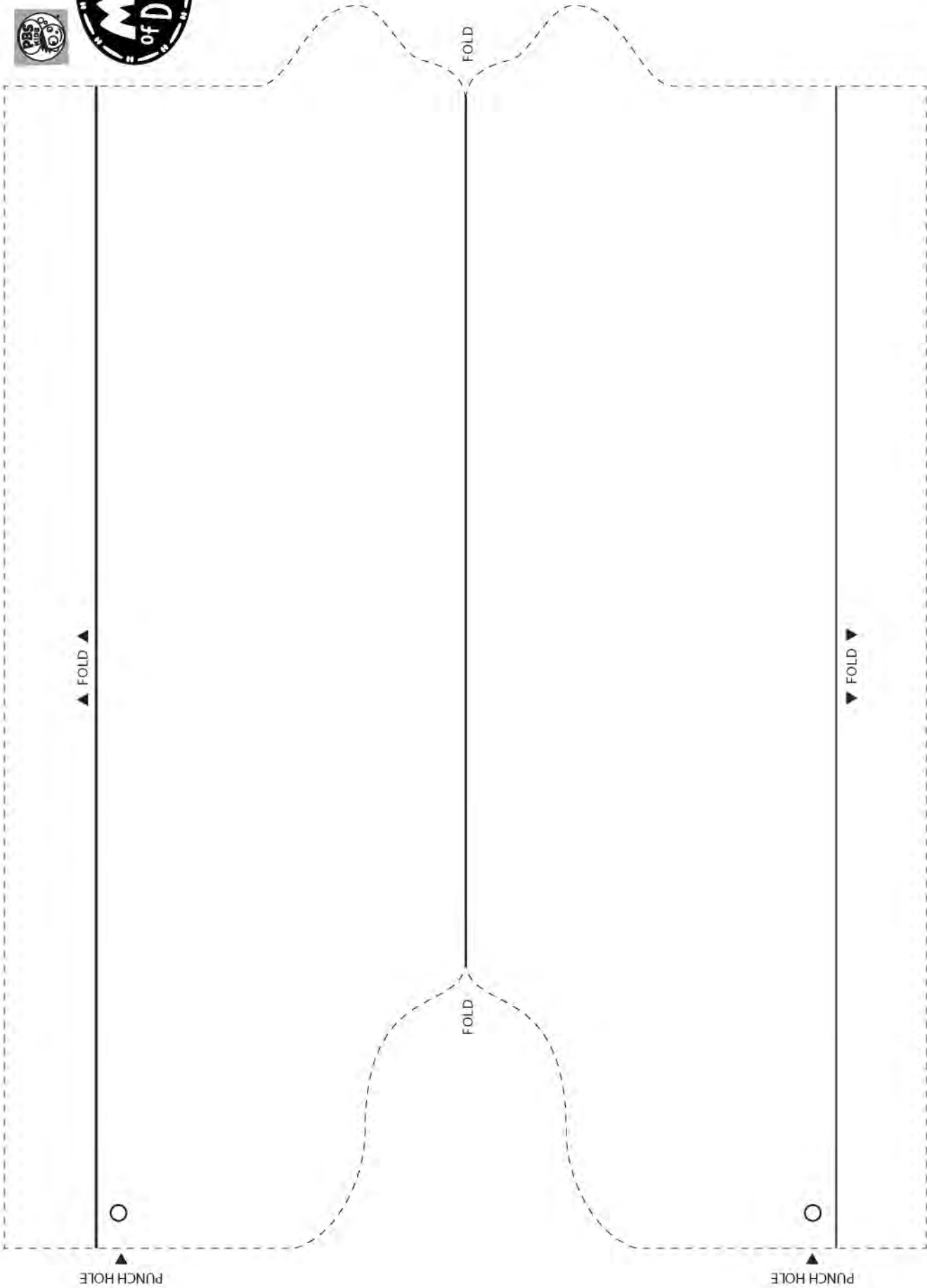


BRUSH BOW

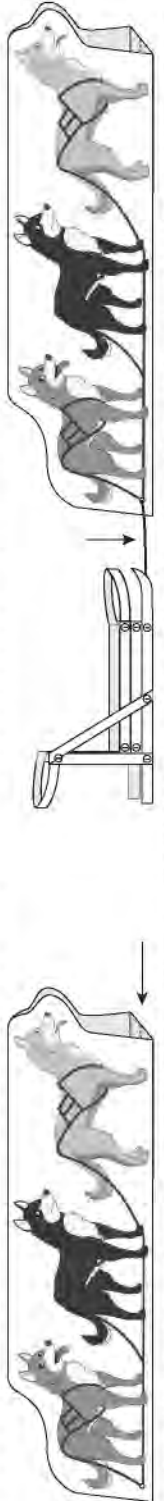


HANDLEBAR

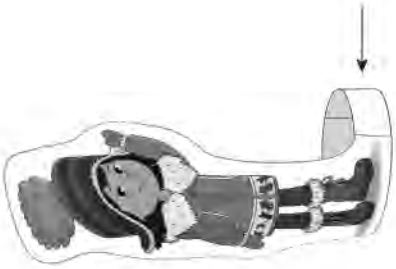




DOG TEAM



PASSENGERS



Molly



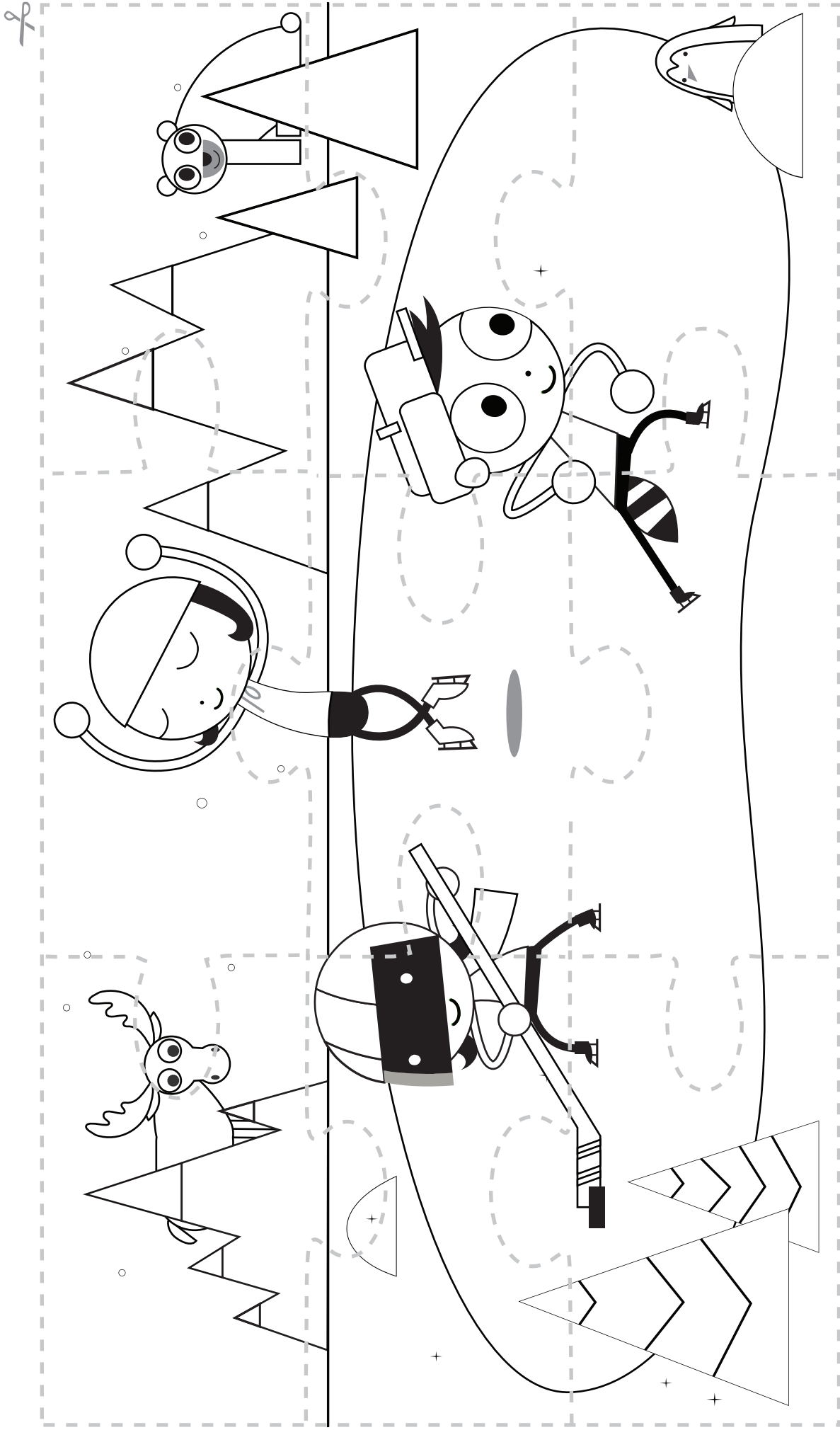
Tooeey



Trini



During winter, the temperature gets colder and outside may look different. You might see snow, ice, frost, or some trees may be bare. Enjoy this puzzle of a cold, winter scene. What sports activities are Del, Dot and Dee enjoying? What animals do you see? Talk with someone about what you observe.



Find more games and activities at pbskidsforparents.org



Let's Go
LUNA!



What to Wear in Winter

Winter Where I Live

Draw a picture of yourself wearing the clothes you would wear to go outside in winter.

Sponsored by:

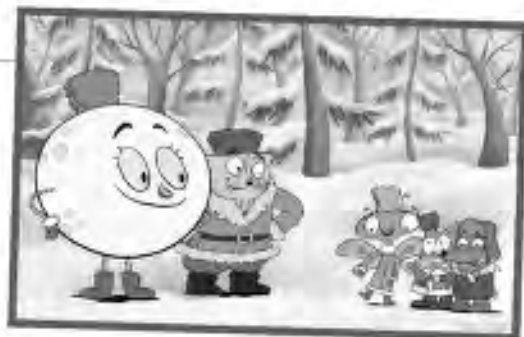


LET'S GO LUNA! © 2018 LATW Productions Inc. PBS KIDS and the PBS KIDS Logo are registered trademarks of Public Broadcasting Service. Used with permission. Corporate Funding for LET'S GO LUNA! is provided by Target. Made available by the Corporation for Public Broadcasting, a private corporation funded by the American people.

For more games and activities, visit pbskidsforparents.org

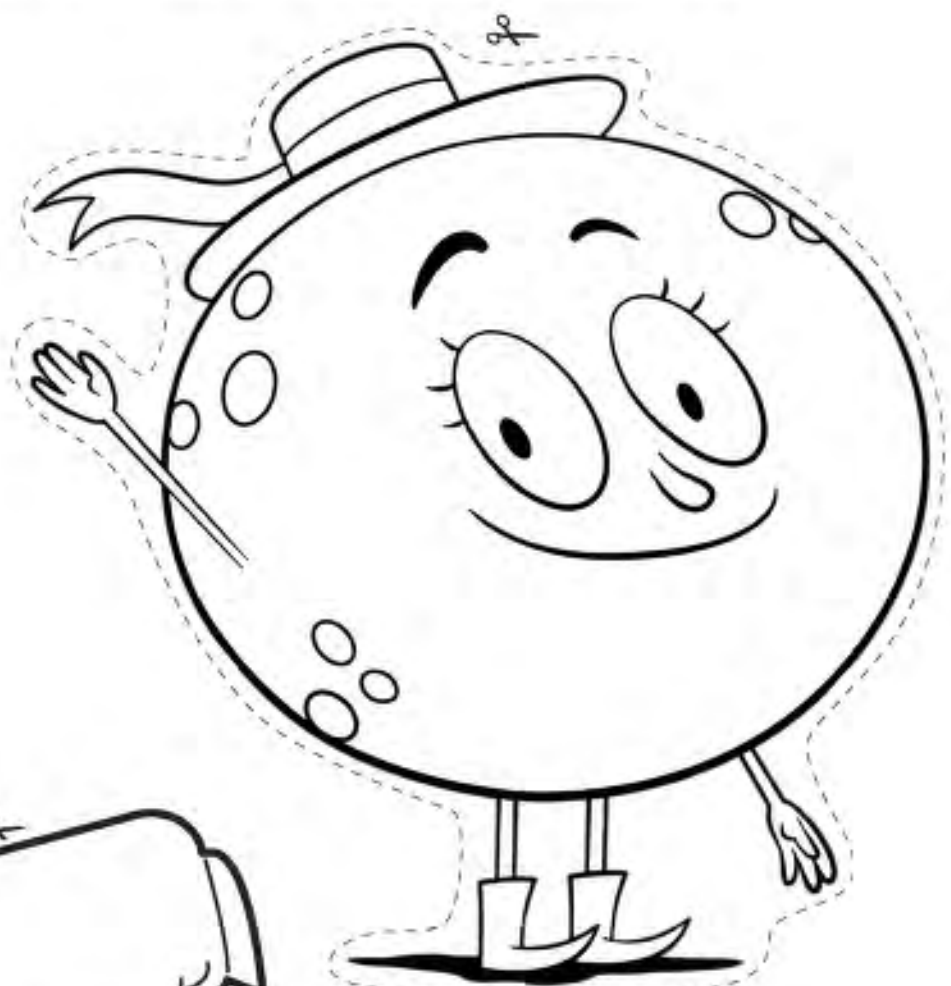


Let's Go LUNA!

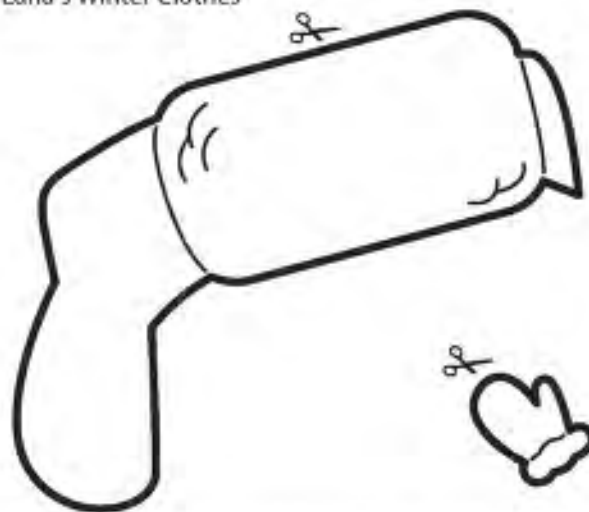


Russian Clothes and Luna Characters

1. Color the characters in their winter clothes.
2. Cut out the character on the dashed line. Cut out the clothes on the thick black line.
3. Glue the winter clothes onto the character.
4. Glue the character onto the "Winter in Russia" side of the **What to Wear in Winter Handout**.



Luna's Winter Clothes



Luna

Sponsored by:



LET'S GO LUNA! © 2016 LATV Productions Inc. PBS KIDS and the PBS KIDS Logo are registered trademarks of Public Broadcasting Service. Used with permission. Corporate Funding for LET'S GO LUNA! is provided by Target. Made available by the Corporation for Public Broadcasting, a private corporation funded by the American people.

For more games and activities, visit pbskidsforparents.org

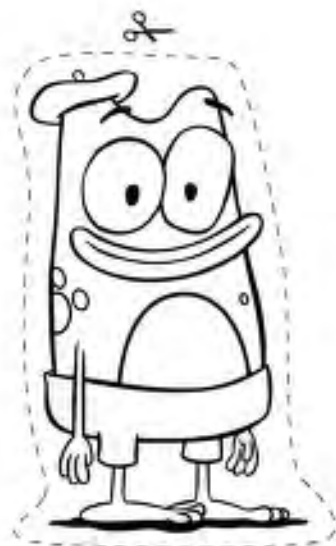


Let's Go Luna!

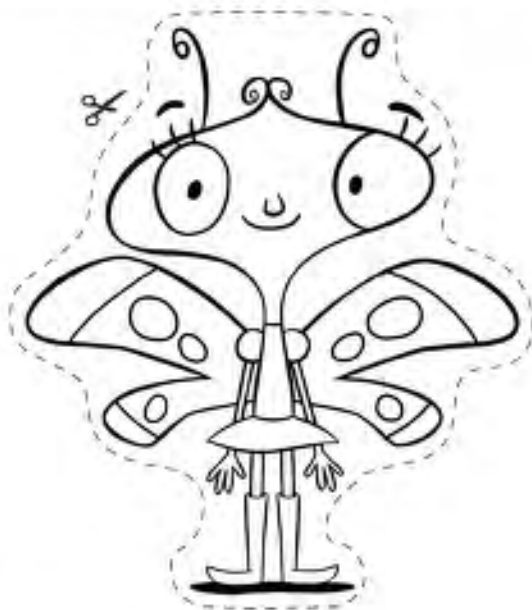


Russian Clothes and Luna Characters

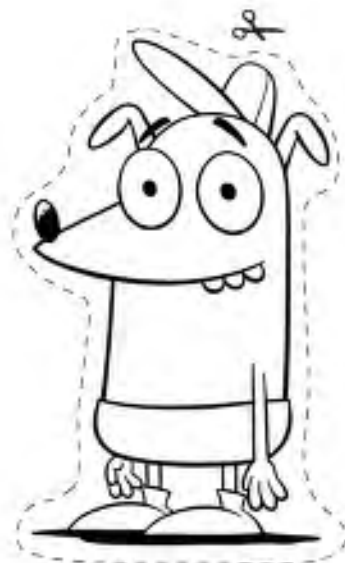
1. Color the characters in their winter clothes.
2. Cut out the character on the dashed line. Cut out the clothes on the thick black line.
3. Glue the winter clothes onto the character.
4. Glue the character onto the "Winter in Russia" side of the **What to Wear in Winter Handout**.



Leo

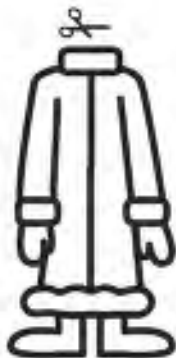


Carmen



Andy

Winter clothes



Sponsored by:



LET'S GO LUNA! © 2018 LATW Productions Inc. PBS KIDS and the PBS KIDS Logo are registered trademarks of Public Broadcasting Service. Used with permission. Corporate Funding for LET'S GO LUNA! is provided by Target. Made available by the Corporation for Public Broadcasting, a private corporation funded by the American people.

For more games and activities, visit pbskidsforparents.org



Let's Go
LUNA!



What to Wear in Winter

Winter in Russia

Glue the characters wearing their winter clothes here.

Sponsored by



LET'S GO LUNA! © 2018 LATVY Productions Inc. PBS KIDS and the PBS KIDS Logo are registered trademarks of Public Broadcasting Service. Used with permission. Corporate Funding for LET'S GO LUNA! is provided by Target. Made available by the Corporation for Public Broadcasting, a private corporation funded by the American people.

For more games and activities, visit pbskidsforparents.org



Learn at Home with PBS KIDS

Schedule Begins October 5, 2020

Explore reading, math, science, life lessons, and more on the PBS KIDS 24/7 channel and live stream! The TV schedule below offers you and your child a chance to learn anytime alongside your favorite PBS KIDS characters.



| TIME (M-F) | SHOW | GRADE | LEARNING GOAL |
|--------------------|--|--------------|---|
| 6/5c am | Splash and Bubbles | PK-K | Science |
| 6:30/5:30c am | WordWorld | PK-K | Literacy |
| 7/6c am | Peg + Cat | PK-K | Math |
| 7:30/6:30c am | Peep and the Big Wide World | PK-K | Science |
| 8/7c am | Sid the Science Kid | PK-K | Science |
| 8:30/7:30c am | Super WHY! | PK-K | Literacy |
| 9/8c am | Pinkalicious & Peterrific | PK-1 | The Arts |
| 9:30/8:30c am | Clifford the Big Red Dog | PK-K | Social & Emotional Learning, Literacy |
| 10/9c am | Let's Go Luna! | K-2 | Social Studies |
| 10:30/9:30c am | Dinosaur Train | PK-K | Science |
| 11/10c am | The Cat in the Hat Knows a Lot About That! | PK-1 | Science & Engineering |
| 11:30/10:30c am | Martha Speaks | K-2 | Literacy |
| 12 pm/11c am | Nature Cat | K-3 | Science |
| 12:30 pm/11:30c am | Ready Jet Go! | K-2 | Science & Engineering |
| 1/12c pm | Arthur | K-2 | Social & Emotional Learning |
| 1:30/12:30c pm | Odd Squad | K-2 | Math |
| 2/1c pm | Cyberchase | 1-5 | Math |
| 2:30/1:30c pm | Molly of Denali | K-2 | Literacy |
| 3/2c pm | Pinkalicious & Peterrific | PK-1 | The Arts |
| 3:30/2:30c pm | Elinor Wonders Why | PK-K | Science & Engineering |
| 4/3c pm | Sesame Street | PK-K | Literacy, Math, Social & Emotional Learning |
| 4:30/3:30c pm | Daniel Tiger's Neighborhood | PK-K | Social & Emotional Learning |
| 5/4c pm | Curious George | PK-K | Math, Science & Engineering |
| 5:30/4:30c pm | Curious George | PK-K | Math, Science & Engineering |
| 6/5c pm | Wild Kratts | K-2 | Science |
| 6:30/5:30c pm | Wild Kratts | K-2 | Science |

Access FREE, at-home learning activities, tips, and more on pbskidsforparents.org



Learn at Home with PBS KIDS

Play and learn anytime and anywhere with free apps from PBS KIDS! Use the chart below to find the app that aligns to your child's grade, learning goal, and favorite PBS KIDS show - then download it on your on your mobile or tablet device to play online, offline, or anytime.

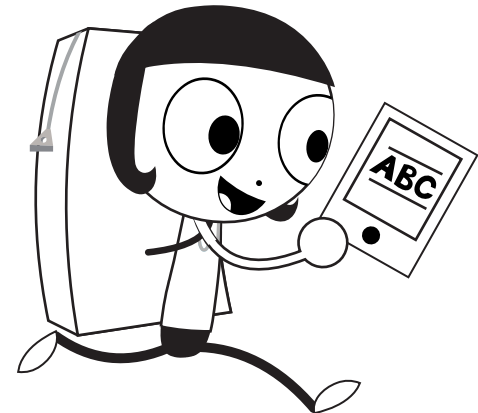
Apps for Social & Emotional Learning

| | | |
|--------------------------|------|-----------------------------|
| Daniel Tiger for Parents | PK-K | Social & Emotional Learning |
| PBS KIDS Games app | K-2 | Multiple Learning Goals |
| PBS KIDS Video app | K-2 | Multiple Learning Goals |



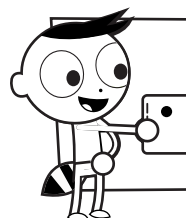
Apps for Literacy Learning

| | | |
|-----------------------|------|-------------------------|
| Dinosaur Train A to Z | PK-K | Literacy, Science |
| Molly of Denali | K-2 | Literacy |
| PBS KIDS Games app | K-2 | Multiple Learning Goals |
| PBS KIDS Video app | K-2 | Multiple Learning Goals |



Apps for STEM Learning (Science, Technology, Engineering & Math)

| | | | | | |
|------------------------------------|------|-------------------------|------------------------------|-----|-------------------------|
| PBS Parents Play & Learn | PK-K | Literacy, Math | Ready Jet Go! Space Explorer | K-2 | Science |
| Play & Learn Engineering | PK-K | Science and Engineering | Ready Jet Go! Space Scouts | K-2 | Science and Engineering |
| Play & Learn Science | PK-K | Science | Nature Cat's Great Outdoors | K-3 | Science |
| Splash and Bubbles for Parents | PK-K | Science | PBS KIDS ScratchJr | 1-2 | Coding |
| Splash and Bubbles Ocean Adventure | PK-K | Science | Outdoor Family Fun with Plum | 1-3 | Science and Engineering |
| The Cat in the Hat Builds That! | PK-K | Science and Engineering | Cyberchase Shape Quest | 1-5 | Math, Science |
| The Cat in the Hat Invents | PK-K | Science and Engineering | PBS KIDS Games app | K-2 | Multiple Learning Goals |
| Jet's Bot Builder: Robot Games | K-2 | Science and Engineering | PBS KIDS Video app | K-2 | Multiple Learning Goals |
| Photo Stuff with Ruff | K-2 | Science | | | |



pbskids.org/apps

