

klrn 

**LOCAL
CONTENT
REPORT
FY 2021**



**The mission of KLRN is
to open a world of lifelong
learning through trustworthy
and enriching programs
on-air, online and
in our community.**

KLRN Channels

KLRN broadcasts **24 hours a day on 4 channels**
in South Central Texas.



9.1



9.2



9.3



9.4

KLRN LIVESTREAM - [KLRN.ORG/LIVE](https://www.klrn.org/live)



LOCAL PROGRAMMING

On The Record

On the Record features interviews with San Antonio's key players in politics, business and community activism. Produced weekly, it also includes a round-table discussion with local journalists who keep a pulse on important issues impacting our city. Hosted by Randy Beamer.

Watch on Thursdays at 7 p.m., Saturdays at 5:30 p.m. and Sundays at 1 p.m., and also on Sundays at 5:30 p.m. on KLRN World 9.2.

KLRN News Updates

KLRN News provides daily news updates (Monday through Friday) about local happenings in San Antonio and South Texas. This is made possible with the collaboration of independent sources, news partners and other media.

Hank & Emma Faye: Sign of the Day

Hank & Emma Faye is a KLRN Digital Series geared towards children 4-8 years old, hosted by Emma Faye Rudkin and her black lab, Hank.

Set in a lively playroom, Emma Faye communicates with kids through lessons of sign language, in order to promote social emotional development, inclusiveness, kindness and friendship. This KLRN production won a Lone Star Emmy Award in the category: INFORMATIONAL / INSTRUCTIONAL - SHORT FORM OR LONG FORM CONTENT.

Foundation: The Black Church in San Antonio

The Black church was more than a brick and mortar gathering place on Sunday. It was where a civil rights movement was born, where slavery was fought, where leaders men and women - were created and grown. The Black church pushed the limits of White community leadership to accept the very existence of African Americans as equal people. This was a KLRN special in commemoration of Black History Month.

¡SALUD! Celebrating Latina Leaders

¡Salud! was a new show highlighting Hispanic women taking charge in the business world in San Antonio.

Our city features many Latinas who work at, own, or operate a variety of businesses. It's time to give them the recognition they deserve. Meet the Latina leaders who are working in our community, from large corporations to corner bakeries. Join us as we hear firsthand from women who have broken stereotypes and barriers to reach success - and what they learned along the way. This was a six part series, KLRN production.

Future of Work

Future of Work was a three-part series of programs and community discussions that explored monumental changes in the workplace and the long-term impact on workers, employers, educators and communities. Employment is part of the American Dream. Produced by KLRN.

The State of Health in San Antonio

This KLRN special was part of a two month campaign focused on healthy living. The State of Health in San Antonio featured medical professionals from University Health to discuss the Covid-19 pandemic and other health related topics.

Business of Business San Antonio 2021

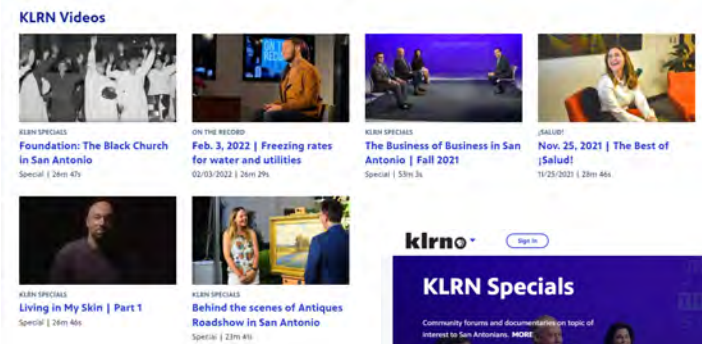
This KLRN special program featured host Henry Cisneros and focused on how the economy has been faring throughout the 2020-2021 Covid-19 pandemic. This hour-long presentation covered a variety of areas that are all vital to the economic growth of San Antonio.





LOCAL ON DIGITAL

On Demand



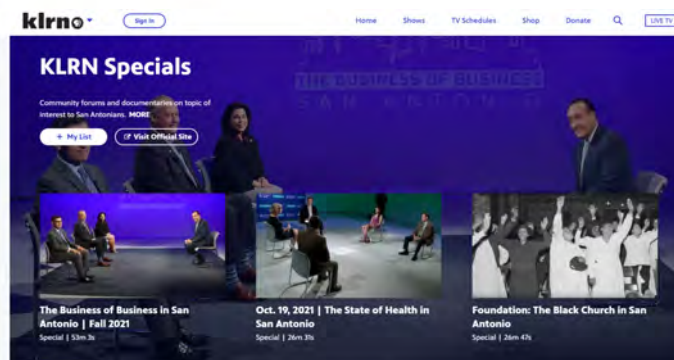
KLRN.ORG

304,182 website visits
from **163,257** visitors

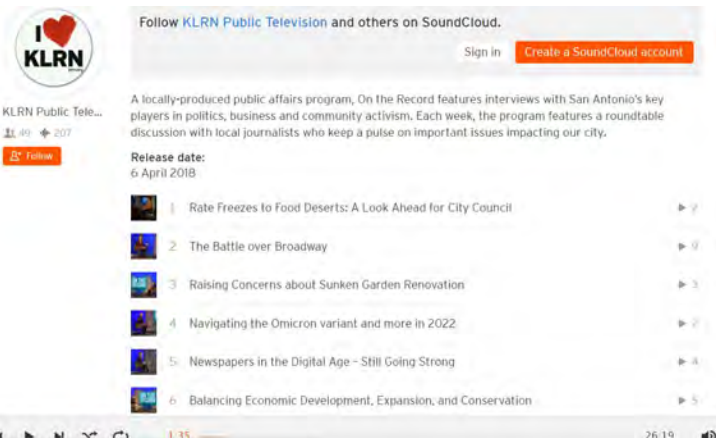
KLRN Livestream
Available 24/7 on
klrn.org/Live

KLRN Video Player
807,805 Streams
159,024 Viewers
Includes web and OTT viewing.

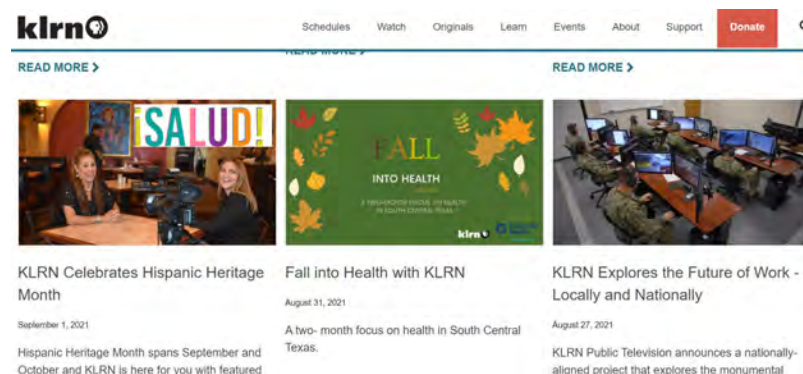
All KLRN content is available to
watch online.



Podcasts



Blog Posts



Social Media



16,259 Likes
17,753 followers



4,292 followers



9,434 followers



1,223 subscribers
139,907 views (in FY)



New TikTok
@KLRNTV



LOCAL CONNECTION

Featured on KLRN Programs

Alamo Citizen's Advisory Committee
Alamo Colleges District
Alamo Community College District
Alamo Conservator
Animal Care Services
Austin Bureau
Bexar County
Bexar County Sheriff's Office
Bexar Facts
Brackenridge Park Conservancy
Build San Antonio Green
Catholic Charities
City Education Partners
City of San Antonio
Clarity Guidance Center
CPS Energy
Edgewood ISD
Fix SAPD
Geekdom
Girl Scouts of Southwest Texas
GO RIO River Cruises
KWEX
Luminaria
MarketVision
Martinez Street Women's Center
Metro Health
MINT Salon
Mission San Jose Neighborhood Association
Musicians of the San Antonio Symphony
Port San Antonio
RAICES
San Antonio Business Journal
San Antonio Chamber of Commerce
San Antonio Conservation Society
San Antonio Current
San Antonio Economic Foundation
San Antonio Heron
San Antonio International Airport
San Antonio African American Community Archive and Museum
San Antonio Board of Realtors (SABOR)
San Antonio Express News
San Antonio Hispanic Chamber of Commerce
San Antonio Hotel & Lodging Association
San Antonio Housing Authority
San Antonio Report
San Antonio River Authority
San Antonio's Police Officer's Association
SAWS
SJRC-Texas

St. Mary's University
STAAMP allergy
SWBC
Tejas Building Contractors
Texas A&M University San Antonio
Texas Biomedical Research Institute
Texas Public Radio
Texas State Teachers Association
The Children's Shelter
The Community Impact Newspaper
University of Texas San Antonio
USAA
UT Health
UT Health San Antonio
UT Health Science Center
University of Texas at San Antonio
Visit San Antonio





LOCAL ISSUES DISCUSSED

- ❖ The latest on the COVID-19 crisis in SA
- ❖ A petition drive to change the governance of SAWS
- ❖ Consolidation between some city and county departments
- ❖ Inclusion of the south and west sides of town in COVID-19 vaccinations
- ❖ What San Antonio officials want to see in the upcoming legislative session
- ❖ The start of construction for the downtown Hemisfair project.
- ❖ The efforts of "FIX SAPD"
- ❖ How the county plans to handle the rodeo crowds with COVID-19
- ❖ The city and police contract negotiations
- ❖ Inequities of the COVID-19 vaccination outreach
- ❖ Efforts to reform the SAPD
- ❖ San Antonio's tree ordinance not being strong enough
- ❖ Developers get variances allowing them to tear out centuries old oak trees.
- ❖ Kids and mental health during the pandemic
- ❖ The plan for dealing with the growing homeless population in San Antonio
- ❖ Police Association President Danny Diaz on city/union negotiations
- ❖ Breaking down CPS Energy's plan for renewables going into the future
- ❖ How the utility plans to avoid a repeat of the power loss we saw during last week's winter event
- ❖ FIX SAPD on their efforts to change how the city deals with the police union
- ❖ The remains of an early African American church found during construction of the San Pedro Creek Project
- ❖ The winter storm and its impact on the homeless
- ❖ Changes in leadership for the Alamo Plaza Renovation Project
- ❖ The STEAM project within the Edgewood ISD.
- ❖ Explaining Bitcoin
- ❖ The city's new Committee On Emergency Preparedness
- ❖ What happened during the winter storm at a SAHA housing complex
- ❖ The growing border issues
- ❖ Pushing the city to adopt economic incentives for equal pay for women
- ❖ Why the city needs to continue investing in businesses
- ❖ The latest on the Alamo Renovation Plan.
- ❖ The underage immigrants being housed in San Antonio
- ❖ Ways to deal with the border crisis
- ❖ Local programs aimed at domestic violence, gun violence, and mental health
- ❖ The city's approach to open records requests
- ❖ A new video documentary the Texas Legislature and cannabis
- ❖ Luxury homes sales in San Antonio are at a record high
- ❖ Why CPS Energy Customers will likely see their rates go up this year
- ❖ The SAPOA and the lack of community trust
- ❖ What is a community land trust, and how does it work
- ❖ The new book The Texas Triangle
- ❖ Controversial plans by SAWS to put sewer and water lines through a preserved natural area
- ❖ Tax incentives for developers of the Lone Star Brewery.
- ❖ The embattled Specht Road Water main/EAA easement plan
- ❖ The latest on the San Pedro Creek Culture Park
- ❖ Out-of-state and out-of-the-country investors buying up San Antonio single family homes
- ❖ The facts about rate increases and the fallout from the winter storm
- ❖ The newly renovated City Hall
- ❖ The raises and pension plans that City Council has just approved for their Council Aides
- ❖ Plans for the Woolworth Building in the new Alamo Plaza plan
- ❖ Preservation efforts for the crumbling walls inside the Alamo
- ❖ Beekeeping at the San Antonio International Airport
- ❖ How much money candidates in several city council races spent on the runoff election
- ❖ The 2021 Texas Legislature- what passed, what didn't, and why
- ❖ Introductions to two new City Council Representatives
- ❖ Goals for a downtown district that include more public input into local government
- ❖ The digital divide in one westside community
- ❖ Parked River Barges that can't float right now due to a worker shortage
- ❖ The impact the new progressive council could have on the city

- ❖ The Environmental Protection Agency put San Antonio on the list of top cities for Energy Efficient Buildings
- ❖ The 21 vetoes from the Governor at the end of the main legislative session
- ❖ Why there might be more crime in the area this summer
- ❖ The city's 2-billion dollar budget
- ❖ The new Delta Variant
- ❖ UTSA's push to get an eastside home historical recognition
- ❖ More help in the court system for domestic and elder abuse victims
- ❖ Details on the BCSO now patrolling the Riverwalk
- ❖ The Alamo Citizens Advisory Committee and how it will help design interpretation materials for the museum and plaza
- ❖ Texas Democrats exodus to D.C.
- ❖ The preservation of the AME Church discovered at San Pedro Culture Park
- ❖ The new President of SAHA and the new plans for a high rise near Market Square
- ❖ The city's efforts to mask up and get people vaccinated across San Antonio
- ❖ Teachers pushing Governor Abbott to mandate masks in public schools before the start of the new school year
- ❖ The city's hospitality industry recovering from the first wave of COVID-19 that shut down hotels and travel
- ❖ What drives the misinformation about the COVID-19 vaccine
- ❖ The area's rising COVID-19 rates
- ❖ The growing concerns over the crisis at the border, and how the Governor is battling the feds for control
- ❖ Creating a trail along hill country springs between San Antonio and Austin
- ❖ How the city plans to control scooter mania as people get back onboard
- ❖ COVID-19 and the new Delta variant
- ❖ What it's really like on the front lines of COVID-19
- ❖ The facts full on about this contagious virus
- ❖ Where you can get the free vaccine in San Antonio
- ❖ The city's historic billion dollar budget
- ❖ The county's proposed \$2.8 Billion dollar budget
- ❖ COVID Misinformation and online clicks
- ❖ COVID-19 issues facing San Antonio Independent School District
- ❖ A new report on San Antonio's Brackenridge Park
- ❖ What is driving up the costs of housing
- ❖ The state's foster care system
- ❖ The city's bond election in May of 2022
- ❖ How the city is working to move the economy past the pandemic
- ❖ How the budget for the next year is still supporting arts and culture in San Antonio
- ❖ The status of CPS Energy's lawsuit against energy providers during winter storm Uri
- ❖ The 2022 Texas gubernatorial race
- ❖ The aging Institute Of Texan Cultures
- ❖ The San Antonio Symphony
- ❖ Developments planned for the Guadalupe River near Canyon Lake, and on the southside near Missions Espada and San Juan
- ❖ Plans for a huge new sports compound on the Northwest side
- ❖ Efforts to create an underground travel tunnel from the airport into downtown
- ❖ The states redistricting efforts
- ❖ The upcoming bond project going before the voters next spring
- ❖ The future of the San Antonio College newspaper, The Ranger
- ❖ The new research that indicates John the slave from the Alamo may not have existed
- ❖ Why the Sheriff wants to use his own choice of a consulting firm for the Bexar County Jail
- ❖ Domestic Violence Awareness Month
- ❖ How community leaders are working to lower the cases of domestic violence
- ❖ The new "outdoor" rules for dog owners
- ❖ Why Texas needs to change its "beef" culture to help fight climate change
- ❖ The city's Non-Discrimination Ordinance, and the call to expand it to small businesses
- ❖ The economic impact of UTSA's \$28-million dollar contract with football coach Mike Traylor
- ❖ Concern residents in the King William District have as investors turn homes into airBnB rentals
- ❖ The re-opening of the international bridge in Laredo to non-essential travelers
- ❖ SA artist Jesse Trevino about his battle with cancer
- ❖ The battle over the noise ordinance task force
- ❖ Geekdom's new cyber-security accelerator
- ❖ The new airport expansion plan
- ❖ Why the conservation society is pushing for a master plan for downtown murals
- ❖ The city's database of development incentives
- ❖ What it takes for a print newspaper to stay relevant in the digital age
- ❖ The race for County Judge
- ❖ The city's "cool pavement" pilot project a brand new newspaper in San Antonio



LOCAL GUESTS

On The Record

- * Aaronetta Pierce
- * Ananda Tomas
- * Andres Anjuhar
- * Anita Ledbetter
- * Annette Rodriguez
- * Antonio Guillen
- * Ben Olivo
- * Bonnie Conner
- * Brendan Gibbons
- * Camilla Sauers
- * Casandra Matej
- * Cher Mikulka
- * Christian Archer
- * Clayton Perry
- * Coda Rayo-Garza
- * Danny Diaz
- * David Robbins
- * Deborah Jarmon
- * Derek Boese
- * Diego Bernal
- * Diego Mendoza-Moyers
- * Dr. Anita Kurian
- * Dr. Bryan Alsip
- * Dr. Charles Gentry
- * Dr. Colleen Bridger
- * Dr. Jan Patterson
- * Dr. Jason Bolling
- * Dr. Larry Schlesinger
- * Dr. Mike Flores
- * Dr. Robert Leverence
- * Dr. Tom Patterson
- * EJ Pinnock
- * Emilie Eaton
- * Erik Walsh
- * Gilbert Garcia
- * Greg Jefferson
- * Dr. Henrietta Muñoz
- * Henry Cisneros
- * Jackie Wang
- * Jacque Callanen
- * Jalen McKee-Rodriguez
- * Jeff Coyle
- * Jenna Saucedo-Herrera
- * Jenny Hixon
- * Jessica Knudsen
- * Joey Palacios
- * John Courage
- * Jonathan Gurwitz
- * Jonathan Ryan
- * Joshua Fechter
- * Juan Antonio
- * Justin Rodriguez
- * Judge Nelson Wolff
- * Katie Vela
- * Kerry Averty
- * Kevin Wolff
- * Lauren Caruba
- * Liza Barratachea
- * Lynn Osborne Bobbitt
- * Madison Iszler
- * Maggie Thompson
- * Manny Pelaez
- * Marc Anderson
- * Maria Villagomez
- * Mario Bravo
- * Mary Ellen Goree
- * Mayor Ron Nirenberg
- * Melissa Cabello-Havrda
- * Michael Amezquita
- * Michael Carrillo
- * Michael Shannon
- * Michael Taylor
- * Oji Martin
- * Ovidia Molina
- * Pam Rosser
- * Paula Gold-Williams
- * Pedro Martinez
- * Peter Sakai
- * Phyliss Viagran
- * Queta Rodriguez
- * Randy Diamond
- * Rebecca Viagran
- * Reed Williams
- * Richard Webner
- * Robert Puente
- * Roberto Trevino
- * Rod Sanchez
- * Roland Gutierrez
- * Rudy Garza
- * Sanford Nowlin
- * Scott Huddleston
- * Scott Huizenga
- * Sheriff Javier Salazar
- * Steve Graham
- * TJ Mayes
- * Tara Rousett
- * Taylor Goldenstein
- * Terry Vasquez
- * Tommy Calvert
- * Trish DeBerry
- * Tuesdaé Knight

Foundation: The Black Church in San Antonio

- * Dr. Kenneth Kemp
- * Dr. Claudette Copeland
- * Mario Salas
- * Dr. Charles Gentry
- * Christine Clayton, SARA

¡SALUD!

- * Hope Andrade, Chair- San Antonio Chamber of Commerce/ Co-owner- GO RIO River Cruises
- * Andrea Figueroa, President/CEO, Martinez Street Women's Center
- * Yadhira Lozano, Executive Director, Luminaria
- * Maria Villagomez, Deputy City Manager
- * Dr. Monica Verduzco-Gutierrez, University Health
- * Melanie Mendez-Gonzales, lifestyle Latina blogger
- * General Angela Salinas, CEO, Girl Scouts of Southwest Texas
- * Julissa Cabrielo, President, Tejas Building Contractors
- * Marina Gonzales, President, San Antonio Hispanic Chamber of Commerce
- * Bonnie Garcia, PR/Marketing – MarketVision
- * Laura Cabinilla, Corporate Diversity Leader, USAA
- * Debbie Marino, Senior Vice President, Corporate Relations, SWBC
- * Thunder Rosa, Pro-wrestler
- * Delia Flores Contreras, CEO, City Education Partners
- * Dr. Erika Gonzalez, CEO, STAAMP Allergy
- * Blanquita Cullum - Broadcaster/Journalist
- * Veronica Salazar-Mendez, CFO, University of Texas at San Antonio
- * Laura Diaz, MINT Salon

The State of Health in San Antonio

- * Dr. Jason Bowling, University Health
- * Dr. Monica Verduzco-Gutierrez, COVID-19 Recovery Clinics, University Health
- * Dr. Patrick Ramsey, Inpatient Obstetrics, University Hospital
- * Dr. Jane Lynch, UH Texas Diabetes Institute, University Health.

Business of Business San Antonio 2021

- * Nelson Wolff, Judge, Bexar County
- * Taylor Eighmy, President, University of Texas at San Antonio
- * Dr. Mike Flores, Chancellor, Alamo College District
- * Rebecca Viagran, Director of Workforce Development and Community Partnerships, TAMUSA
- * Ron Nirenberg, Mayor, City of San Antonio
- * Richard Perez, President, San Antonio Chamber of Commerce
- * Tom Tunstall, Senior Research Director at The University of Texas at San Antonio Institute for Economic Development
- * Robert Thraillkill, Board Chair, Visit San Antonio
- * Michelle Madson, President & CEO, San Antonio Hotel & Lodging Association
- * Lloyd Potter, Ph.D. Professor & Director, Institute for Demographic and Socioeconomic Research UTSA, Texas State Demographer
- * Charles Woodin, CEO, Geekdom
- * Jim Perschbach, President/CEO, Port San Antonio

PRODUCTION with PURPOSE

KLRN produced a variety of local content to inform, educate, entertain and empower our community. KLRN serves 33 counties in South Central Texas.

klrno



Click Image to View Video

LIGHTS, CAMERA, ACTION!



KLRN Production Services

The KLRN Production team provides uplink services, satellite media tours, and live interviews for both local and national media networks, including **CNN**, **MSNBC** and **Fox News**.



klrn

Education

Early Childhood

Ready, Set, Grow! Since 2009, KLRN has presented Play & Learn, a free city-wide, mobile child/caregiver school readiness program, reaching families with children birth to age five. Families receive free books and take-home activities each week. Along with the series of family sessions KLRN also hosts PBS Kids Screenings and outreach activities to promote the program. This year, KLRN presented over 166 early childhood activities; impacting over 29,046 adults and children in their care.

Bright By Text KLRN is one of seven PBS pilot stations to launch Bright By Text, a parent and caregiver messaging program that sends text messages with tips and resources promoting child development activities targeted to a child's age from birth to age 5. Since the launch, 2,300+ people have subscribed. The project has been supported by the Corporation for Public Broadcasting and the United Way of San Antonio & Bexar County.

2,300+ people have subscribed

Sesame Street in Communities Sesame Street in Communities provides a bilingual website and bilingual resources for early childhood providers and parents with a special focus on difficult topics to discuss such as parental addiction, grief and other traumatic experiences.

KLRN organized two Community Summits, one in English and one in Spanish on the topic of: How Traumatic Experiences Effect Learning. In addition to the summit, KLRN held 13 teacher trainings reaching 440 classrooms awarding 527 training hours. Through parent trainings, resource bags and teacher trainings over 10,000+ children were impacted.

Family Newsletter In March of 2020, KLRN began to offer a family newsletter focused on early childhood resources, tips and activities. The weekly newsletter ran from March-September as a resource for parents during the pandemic. In September the format changed to a monthly edition. Each Family newsletter has gone out to over 30,000+ families. Editions included information about Social Emotional Development, Health and Nutrition, Emotional Well Being, and KLRN's educational initiatives.



Pictures feature Participants of the Play & Learn program work on learning activities.



**FREE ACTIVITIES,
GAMES, AND IDEAS
FOR YOUR FAMILY!**

The mission of KLRN is to open a world of lifelong learning through trustworthy and enriching programs on-air, online and in our community.



Dear Families,

klrn

Education

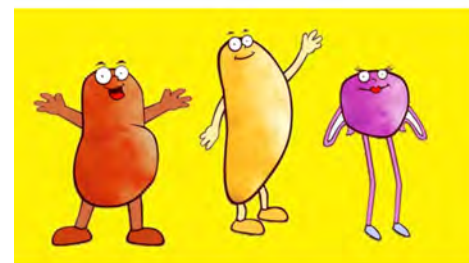
School Services

PBS LearningMedia KLRN provides free access to PBS LearningMedia, a digital library that houses thousands of educational resources that include videos designed specifically for the classroom, interactives and lesson plans. All lesson plans are aligned to the Texas Essential Knowledge & Skills. Teachers can save the resources and find professional development resources. Currently, there are over 32,400 registered users in our community. Since launching, KLRN has contributed content to the platform, with 122 educational assets uploaded to the service.

The Healthy Kids Project This year, KLRN grew our connection with local mental health organizations as well as connected with local schools and community organizations with the Healthy Kids Project. Together, we reached over 18,000 students and 600+ classrooms. KLRN also launched the Healthy Kids Snack and Fitness Breaks. During these bilingual family engagement sessions families made healthy snacks together and participated in fun fitness activities. This year, KLRN trained 850 teachers, parents, and family members through virtual workshops and in partnership with elementary schools. The project was supported by the San Antonio Medical Foundation.

Professional Development

Watt Watchers KLRN continued their partnership with Disco Learning Media with additional resources being invested by University of Texas at Austin. KLRN HOSTED 8 PROFESSIONAL Development trainings and virtual screenings reaching over 5,780 students in 280+ classrooms. This program is focused on energy conservation and includes K-12 educational resources. KLRN offered family sessions in English and in Spanish, highlighting energy saving tips for families. KLRN hosted 5 virtual Watt Watchers sessions for families. Through these activities a total of 111 participants were impacted.



The Healthy Kids Project

KLRN's Healthy Kids Project supports healthy lifestyles by influencing eating decisions and physical activities. The project engages all types of learners: visual, auditory and kinesthetic.



Learn with Media KLRN's "Learn with Media" e-newsletter is sent to over 39,000 educators each month during the school year. Editions included information about Social Emotional Development, STEM Activities, Health and Nutrition, and KLRN's educational initiatives.

PBS LearningMedia Training for Educators Since March 2020, KLRN has offered ongoing support for educators, highlighting lesson plans aligned to the Texas Essential Knowledge & Skills and resources available through PBS LearningMedia. These professional development trainings cover topics such as Social Emotional Learning, Resources for Mental Health and Wellness, STEAM, and Cultures around the World. KLRN Hosted 47 Professional Development trainings awarding 1,167 professional development training hours for 800 + teachers and impacting 34,000+ students in the KLRN Viewing Area.

Community Engagement

KLRN PBS KIDS Channel On April 1st, KLRN celebrated the 4 year anniversary of the KLRN PBS KIDS channel.

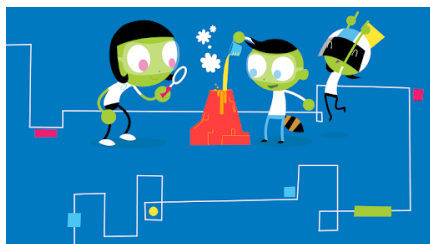


Learn at Home Bags Learn at Home Bags were distributed beginning in March 2020 in order to provide much needed resources to families who did not have internet connectivity and were less likely to have access to electronic devices. KLRN distributed bags at meal distribution sites in the community and schools providing drive thru meals. More than 11,000 Learn at Home bags were distributed at 74 distributions around the community. Items in bags included: activity books, children's books, various community resources such as mental health resources and utility assistance, KLRN outreach flyers, craft supplies, learning activities and more.



CAMP TV CAMP TV was created to bridge a number of divides by providing a virtual summer camp experience to elementary school students nationwide. CAMP TV is in its second series featured content from the nation's leading educational, arts, and cultural organizations including museums, libraries, nature centers and performing arts centers. KLRN completed 3 local segments with the San Antonio Zoo, Morgan's Wonderland and San Antonio Food Bank. The San Antonio Zoo segment was featured nationally on CAMP TV.

Cyberchase Green It Up Cyberchase Green It Up is a hands-on program designed for children ages 6-8 to inspire a deep appreciation for nature, build STEAM skills, and help students feel empowered to take action in their communities to care for the planet. KLRN completed a 4-week series of sessions with 10 San Antonio Youth Partnership after school sites reaching 250 students and had three virtual Sessions in collaboration with the San Antonio Public Library with activities related to this project reaching 40 families. 2500 bags were distributed at libraries and schools with Green It up Resources.



American Portrait This national storytelling project invited individuals to participate in a conversation about what it really means to be an American today. KLRN worked to gather local submissions from the community to capture the state and spirit of the nation. KLRN hosted 5 educator trainings, one OVEE screening, and engaged with art-based organizations and youth organizations to help promote the American Portrait Grant resources and encourage community members to post their submissions on the American Portrait site. Through the sessions KLRN worked with 100 teachers and students as they explored how they could use the American Portrait resources to tell their story. A total of 49 local submissions were uploaded from KLRN viewers.

Let **KLRN Kids** provide your kids with a Summer Camp Experience filled with adventures, field trips, learning, reading and more.

Watch Camp TV weekdays at 4PM only on **klnr**.

SEASON 1 | Starts May 24
SEASON 2 (NEW!) | Starts June 21

FOR FULL EPISODES, VIRTUAL FIELD TRIP DETAILS, & ACTIVITY IDEAS VISIT KLRN.ORG/CAMPTV

SPRING BREAK WITH klnr

Cyberchase Green It Up

RECYCLED COMMUNITY GARDEN





Education

Partnering Organizations

- * San Antonio Food Bank
- * Easter Seals Early Childhood Intervention
- * Alamo Wellness Group, LLC
- * Fitness Presenter and Event Director
- * Education Service Center, Region 20
- * Westat
- * Alamo STEM Ecosystem
- * San Antonio River Authority
- * Licensed Professional Counselor and Mental Health Consultant
- * Impact Media Partners
- * City Year AmeriCorps
- * Good Samaritan Center
- * San Antonio Chapter of TXAEYC
- * Texas Worksource Commission
- * New Kids on the Block Learning Center
- * Healy Murphy CDC
- * Books and Bibs Childcare
- * Highlands Learning Academy
- * Trinity University
- * NASA

OVEE Screening Partners and Panelists - Science, Energy, and Environment

- | | |
|---|--|
| * University of Texas at Austin | * Herff / Douglas Elementary |
| * Disco Learning Media | * Indian Creek Elementary |
| * Zpryme | * J. Martin Elementary |
| * Alpheus Media | * Japhet Elemetnary- SAISD |
| * Author | * Jubilee Academy |
| * San Antonio Food Bank | * Knowlton Elemntary |
| * House of Representatives of Texas | * Las Palmas |
| * Texas Tribune | * Miler Childcare |
| * Green Spaces Alliance of South Texas | * New Life Christian Church Back to school Drive |
| * EPI center | * Northern Hills Elementary |
| * SAMSAT (San Antonio Museum of Science and Technology) | * Northernhills Elementary |
| * BEE Project (Best Earth Ever Project) | * Pan Am Library |
| * Westwood Terrace | * R3 Student Outreach- tentative |
| * Somerset ISD | * Regency Place Elementary |
| * Northside ISD Even Start Program | * Riverside Park Academy |
| * Brauchle Elementary | * Ross Middle School |
| * Cody Elementary | * Sky Harbor Elem. Southwest ISD |
| * Linton Elementary | * Somerset ISD- Barrera Veterans Elementary |
| * Adams Hill Elementary | * Somerset ISD- EARLY CHILDHOOD ELEMENTARY |
| * Athens Elementary - South San ISD | * South Alamo Medical Clinic |
| * Child Protective Services | * St Paul Catholic Church |
| * Bob Hope Elementary | * St Stephen's Care Center. |
| * Carrillo Elementary - South San ISD | * St. Matthews UMC Day School |
| * Carver Library | * WellMed Pediatric Event |
| * Collins Garden Library | * Westwood Elementary |
| * Cortez Library | * Wetmore Elementary |
| * Driggers Elementary | * YWCA Olga Madrid |



Special Projects

Virtual/Screening Events

- ❖ **Feb. 4, 2021** – Community Screening: Growing Solutions to Food Insecurity
Partners: EPICenter and Juan Garcia from Power Trip
- ❖ **April 22, 2021** – Earth Day Panel Discussion with Local Students
Partners: Mayor's Youth Engagement Council on Climate Change Initiatives, EcoRise, COSA Office of Sustainability
- ❖ **April 29, 2021** – OVEE sneak peek screening of Donkey Hodie
- ❖ **June 8, 2021** – LGBT Q&A: Pride Panel Discussion on Facebook Live
- ❖ **August 10, 2021** – Storytime with Pinkalicious Author Victoria Kann
- ❖ **August 25, 2021** – Future of Work panel discussion part 1
Partners: Goodwill Industries, UP Partnership, Restore Education)
- ❖ **September 8, 2021** – Future of Work panel discussion part 2
Partners: COSA Workforce Development Office, Workforce Solutions Alamo, Indatatech
- ❖ **September 22, 2021** – Future of Work panel discussion part 3
Partners: Senior Planet, United Way of San Antonio & Bexar County
- ❖ **September 23, 2021** – Alma's Way sneak peek OVEE Screening





Alamo Public Telecommunications Council Board of Directors FY21

Executive Committee

Chairman of the Board
Stephen Dufilho
Consultant

Chair-elect
Linde Murphy
Argent Financial Group

Immediate past chair
Luis de la Torre
Clear Channel Outdoor

President & CEO
Arthur Rojas Emerson
KLRN

Treasurer
Seymour Battle, III
Valero

Secretary
Suzanna Rojas
USAA

Nominating Committee Chair
Carissa O'Connor
Community Volunteer

Member at Large
Wendy Erickson
Frost Bank

Member at Large
Michael Fresher
Tobin Center for Performing Arts

Member at Large
Delores Lenzy-Jones
Waterloo Greenway, Austin, TX.

Board Members

Pablo Arenaz
Texas A&M International
University-Laredo

Edwin Blanton
Texas A&M University-
San Antonio

Lisa Bombin
UNICO Communications

Marian J. Braggs
CPS Energy

Charles E. Cantu
Davis, Cedillo & Mendoza

Rebecca Q. Cedillo
Strategic Initiatives Consulting

Kelli P. Cubeta
Cubeta Law Group LLC

Eunice Fernandez
Eunice Fernandez Interiors

Tyler Fleming
National Roofing Partners

Leo Gomez
Brooks Development Authority

Kimberly Harle
Las Aguitas Enterprise, LLC

Barbara Johnson
Broadway Bank

Tuesdaé Knight
SAGE

Phil Lane
KSAT

John LaField
Jefferson Bank

Sonya T. McDonald
Randolph Brooks Federal Credit Union

Robert 'Mo' Morehead
MDR Advertising

Harold Oliver
Government Affairs Professional of Texas, LLC

Richard Perez
San Antonio Chamber of Commerce

Marshall K. Pitman
University of Texas - San Antonio

Edward M. Polansky
Polansky Investments, Inc.

Pamela S. Ray
Oak Hills Periodontics

Ex-Officio member:
Phil Bohlender
KLRN Community
Advisory Board President

Emeritus Members

Joanne Winik (dec)
Betty Anderson (dec)
Jeffrey C. Anderson
Kate Badash
Richard Bothe
Charles E. Cheever, Jr. (dec)
J. Russell Davis
Mike Dwyer
Bruce M. Flohr
Barbara Benavides Gentry Dr.
Leonard E. Lawrence
Jack Lewis, Jr.

W. W. "Bo" McAllister, III
Victor Miramontes
Gregg E. Muenster
Michael Novak
Edward M. Polansky
Leo Rose (dec)
John M. Saenz
Sr. Eliz Anne Sultenfuss (dec)
Alfred C. Vasquez (dec)
Charles Martin Wender
Mary Beth Williamson



KLRN Community Advisory Board FY21

Community Advisory Board Chair

Phil Bohlender
Business Owner, Seed and Lead

Nicolette M. Ardiente
Sr. Sales Administrator, Visit San Antonio

Anna Chowdhury
Major Gift Officer, Texas State University

Ilna Colemere
Retired Educator, Visiting Researcher,
Instructional Designer, Visual Artist

Jay C. Collins
Medical Practice Administrator

Linda Corkill
Self-employed

Michelle Cremer-Rodriguez
Sales Support Coordinator
Capital Group American Funds

Karen J. Davis
Community Volunteer

Dr. Karla Duran
Educator

Celina Garza-Alvarez
Outreach/Communications

Jerry Puente Gonzales
Retired Army R.N., Active R.N., Educator

Miki Jocelyn Hodgson
Sales Executive, Rosemary's Catering

Dr. Sonia L. Jasso
Director

Olga Garza Kauffman
Health Coordinator

Will Maney
Information Technology, USAA

Judy Mangus
Bookkeeper

Dr. Peter McGanity
Retired Orthopedic Surgeon

Dr. Gerald J. Mulvey
University Professor

Rosanne Palacios
Vice President of Advancement, TAMIU

Merribell Parsons
Retired, Columbus Museum of Art Director,
SAMA Curator of European Art

Marcie Hernandez Ramsey
Public Relations Account Supervisor

Donovan J. Rodriguez
Chief of Staff, Texas House of Representatives

Melanie E. Romero
Self-employed Photographer, Production Manager

Christopher Rosas
CPA, VP of Global Tax and Treasury, Rackspace

Mary Frances McGowan Russell
Self-employed, Dietitian

Caroline Stapleton
Pastor, St. John's United Methodist Church

Fernando "Sam" Sepulveda
Retired Construction Manager and Community Volunteer

Mary Styblo
Retired R.N.

Christopher Villa
City Council Aide

Melissa Vela-Williamson
Public Relations Consultant & Owner
MVW Communications



KLRN Corporate Officers

Arthur R. Emerson
President & CEO

Patrick Lopez
Executive Vice President & CFO

Lauren Esquivel
Vice President of Institutional Advancement

Priscilla Lowrance
Board Secretary

Pete Gonzalez
Vice President of Engineering

Gloria Flores
Director of Marketing & Digital

Melissa Galvan
Vice President of Education

Shari St Clair
Director of News & Production

Tiffany Wright
Manager of Cars & Auction

KLRN
501 Broadway
San Antonio, TX. 78215

Mail:
PO Box 9
San Antonio, TX. 78291

Phone: 210.270.9000
www.klrn.org